



Carmex Precision Tools Ltd.

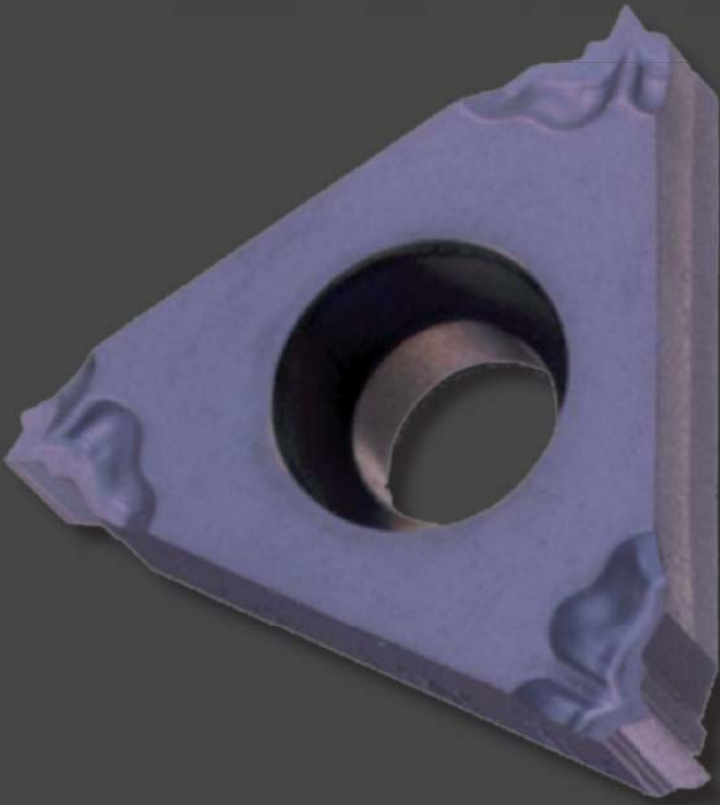
the insert with a

STAINLESS

reputation

BMA

type "B"



From stainless -- through exotics --
to high-carbon steel, Carmex's BMA
threads it all.

CARMEX THREAD TURNING PROMOTION

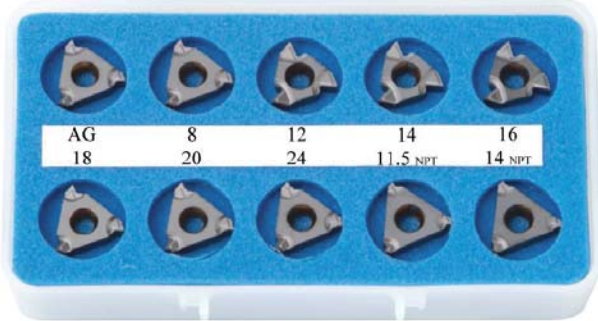
10 INSERTS FOR ONLY \$87⁵⁰

SAVE OVER 50%!

Type-B inserts.

A combination of ground profile with chip-breaker.

BMA Grade: Sub-Mircon Carbide TiAlN Multi-Layer.



(If you would like 10 of the same inserts, please order as BPE or BPI followed by the pitch desired. Example: BPE-AG60; BPE-8UN; etc.).

External Kit
Order Code: **BPE**

Internal Kit
Order Code: **BPI**

INSERTS		INSERTS	
16 ER B AG60	BMA	16 IR B AG60	BMA
16 ER B 8 UN	BMA	16 IR B 8 UN	BMA
16 ER B 12 UN	BMA	16 IR B 12 UN	BMA
16 ER B 14 UN	BMA	16 IR B 14 UN	BMA
16 ER B 16 UN	BMA	16 IR B 16 UN	BMA
16 ER B 18 UN	BMA	16 IR B 18 UN	BMA
16 ER B 20 UN	BMA	16 IR B 20 UN	BMA
16 ER B 24 UN	BMA	16 IR B 24 UN	BMA
16 ER B 11.5 NPT	BMA	16 IR B 11.5 NPT	BMA
16 ER B 14 NPT	BMA	16 IR B 14 NPT	BMA

10 INSERTS AND A TOOL HOLDER FOR ONLY \$149⁰⁰

External Kit
Order Code: **THPE-__**

Internal Kit
Order Code: **THPI-__**

INSERTS		INSERTS	
16 ER B AG60	BMA	16 IR B AG60	BMA
16 ER B 8 UN	BMA	16 IR B 8 UN	BMA
16 ER B 12 UN	BMA	16 IR B 12 UN	BMA
16 ER B 14 UN	BMA	16 IR B 14 UN	BMA
16 ER B 16 UN	BMA	16 IR B 16 UN	BMA
16 ER B 18 UN	BMA	16 IR B 18 UN	BMA
16 ER B 20 UN	BMA	16 IR B 20 UN	BMA
16 ER B 24 UN	BMA	16 IR B 24 UN	BMA
16 ER B 11.5 NPT	BMA	16 IR B 11.5 NPT	BMA
16 ER B 14 NPT	BMA	16 IR B 14 NPT	BMA
HOLDER SELECTION		HOLDER SELECTION	
SER 0500 M16	<u>-1</u>	SIR 0500 M16	<u>-1</u>
SER 0750 K16	<u>-2</u>	SIR 0625 P16	<u>-2</u>
SER 1000 M16	<u>-3</u>	SIR 0750 K16	<u>-3</u>
KEY: K16; SCREW: S16		KEY: K16; SCREW: S16	

Threading Kits are a versatile solution for users that cut a variety of thread types in limited quantity and do not want to sacrifice thread quality.

When ordering, please indicate which holder you would like. For more holder options, call 888-628-5030.

(If you would like 10 of the same inserts, please order as THPE-__ or THPI-__ followed by pitch desired. Example: THPE-1-AG60; THPE-2-8UN; THPI-3-11.5NPT; etc.).



Distributed By:

