

GBA Grooving System

3 Cutting Edges per Insert



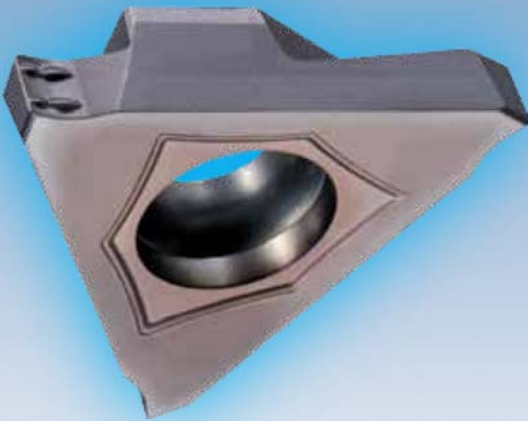
With New MEGACOAT Grade

PR1215

For Consistently Long Tool Life

GBA-MY

- Molded chipbreaker produces smooth chip evacuation



External Grooving Toolholder

Internal Grooving Toolholder

KGBA/KGBAS/KIGBA

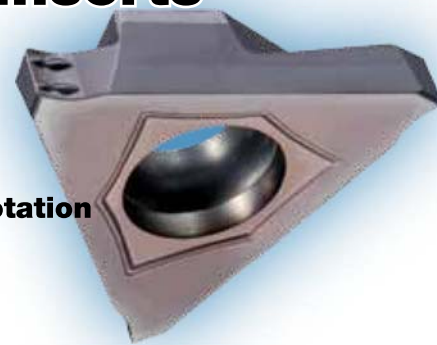
- Pin lock design eliminates top clamp and improves chip evacuation



**Special MEGACOAT Insert Introductory Offer...
Purchase 1 Holder and 10 Inserts for 1 Low Price!**

See Reverse for Details...

Buy 1 KGBA^{R/L} External Grooving Holder or 1 KIGBA^{R/L} Internal Grooving Holder & 10 MEGACOAT PR1215 GBA Inserts for 1 Low Price!



The GBA Advantage...

- Secure clamping for precision grooving
- Grooving next to shoulder is possible due to 2 degree pocket rotation
- Ground and molded chipbreakers available
- Inserts come in standard inch and metric widths

K(I)GBA/GBA Promotional Kits

Kit	Holder	Shank Size	Overall Length	Qty of PR1215 Inserts in Kit	Insert	Groove Width Range	Normal List Price	Sale Price
KGBAR 12-3 Kit----	KGBAR 12-3	3/4"	5"	10	GBA32R--	0.33 - 3.0 mm 0.031 - 0.094"	\$332	\$149
KGBAL 12-3 Kit----	KGBAL 12-3	Square		10	GBA32L--		\$332	\$149
KGBAR 16-3 Kit----	KGBAR 16-3	1"	6"	10	GBA32R--		\$352	\$159
KGBAL 16-3 Kit----	KGBAL 16-3	Square		10	GBA32L--		\$352	\$159
KGBAR 12-4-15 Kit----	KGBAR 12-4-15	3/4"	5"	10	GBA43R--	1.25 - 2.3 mm 0.047 - 0.088"	\$337	\$164
KGBAL 12-4-15 Kit----	KGBAL 12-4-15	Square		10	GBA43L--		\$337	\$164
KGBAR 12-4-25 Kit----	KGBAR 12-4-25	3/4"	5"	10	GBA43R--	2.5 - 3.3 mm 0.094 - 0.125"	\$337	\$164
KGBAL 12-4-25 Kit----	KGBAL 12-4-25	Square		10	GBA43L--		\$337	\$164
KGBAR 12-4-35 Kit----	KGBAR 12-4-35	3/4"	5"	10	GBA43R--	3.5 - 4.8 mm 0.141 - 0.188"	\$337	\$164
KGBAL 12-4-35 Kit----	KGBAL 12-4-35	Square		10	GBA43L--		\$337	\$164
KGBAR 16-4-15 Kit----	KGBAR 16-4-15	1"	6"	10	GBA43R--	1.25 - 2.3 mm 0.047 - 0.088"	\$357	\$169
KGBAL 16-4-15 Kit----	KGBAL 16-4-15	Square		10	GBA43L--		\$357	\$169
KGBAR 16-4-25 Kit----	KGBAR 16-4-25	1"	6"	10	GBA43R--	2.5 - 3.3 mm 0.094 - 0.125"	\$357	\$169
KGBAL 16-4-25 Kit----	KGBAL 16-4-25	Square		10	GBA43L--		\$357	\$169
KGBAR 16-4-35 Kit----	KGBAR 16-4-35	1"	6"	10	GBA43R--	3.5 - 4.8 mm 0.141 - 0.188"	\$357	\$169
KGBAL 16-4-35 Kit----	KGBAL 16-4-35	Square		10	GBA43L--		\$357	\$169
KIGBAR 16-3 Kit----	KIGBAR 16-3	1"	9"	10	GBA32L--	0.33 - 3.0 mm 0.031 - 0.094"	\$394	\$199
KIGBAL 16-3 Kit----	KIGBAL 16-3	Round		10	GBA32R--		\$394	\$199
KIGBAR 20-4 Kit----	KIGBAR 20-4	1-1/4"	10"	10	GBA43L--	1.25 - 4.8 mm 0.047 - 0.188"	\$442	\$219
KIGBAL 20-4 Kit----	KIGBAL 20-4	Round		10	GBA43R--		\$442	\$219

• To place a kit order please include the hand & width of insert desired. For example, to order a KGBAR 16-3 holder and GBA32R062N PR1215 inserts, the kit number will be **KGBAR 16-3 Kit R062N**. The same kit with a GBA32R300 PR1215 insert would be **KGBAR 16-3 Kit R300**.

The internal grooving holders, KIGBAR/L, utilize the opposite hand insert. For example, the KIGBAR 16-3 requires a GBA32L- insert. To order this holder with a GBA32L-031N PR1215 insert, the kit number would be **KIGBAR 16-3 Kit L031N**.

- Promo items subject to availability
- No returns of promo items will be allowed
- Sale Price valid in U.S. only
- Offer valid through June 30, 2012



3040 N. Pointer Road ■ Appleton, WI 54911
800-734-2573 ■ 920-734-2573
Fax: 920-734-1749
Email: sales@valleytool.net
Web: www.valleytool.net