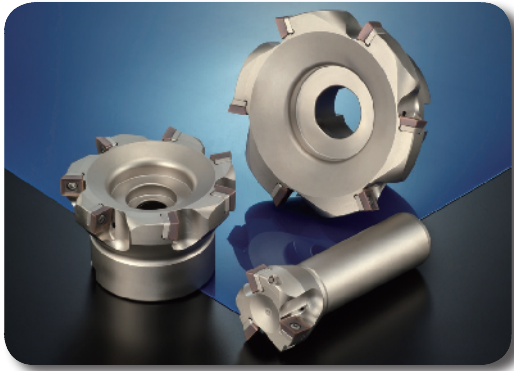


WFX FOUR-CORNERED SHOULDER MILL

for exceptional squareness & surface finish



Features & Benefits

WFX WaveMill is a screw-down type cutter capable of using 4-cornered inserts. Ideal cutting edge design offers exceptional squareness.

Characteristics

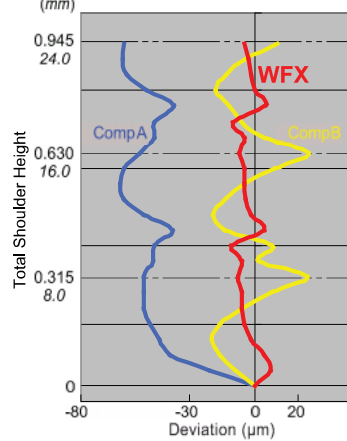
The insert shape is optimized for shoulder milling; when combined with a high-precision body it leaves a superior machined surface finish.

- Maximum depth of cut (a_p) = 0.394" (10.0mm)
- With oil hole = $\varnothing 5$ " or less (125 mm)
- 3 types of chipbreakers

Performance

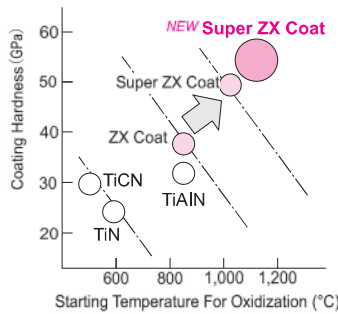
(1) Squareness

Work material: 1049 Tool: WFX12100R ($\varnothing 3.94$ " x 5 flutes)



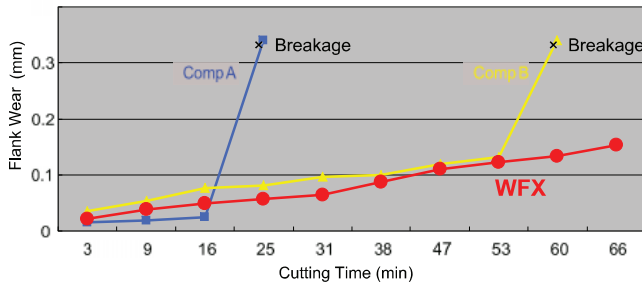
Grades

The WFX type is the first series to offer the newly developed multi-layer PVD coating structure on these grades: **ACP200**, **ACP300**, and **ACK300**. With excellent resistance against wear, fracture, and adhesion, the grades achieve 1.5 times longer tool life than conventional coating.



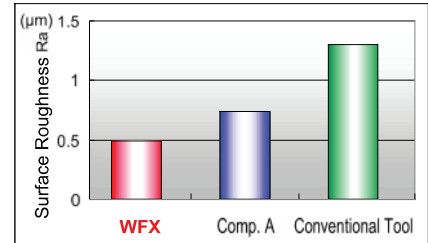
(2) Wear Resistance

Work material: 4140 Tool: WFX12100R ($\varnothing 3.94$ " x 1 flute test)
 Cutting Conditions $v_c = 656$ SFM $f_z = 0.006$ IPT $a_e = 1.181$ " $a_p = 0.1969$ "



(3) Surface Finish

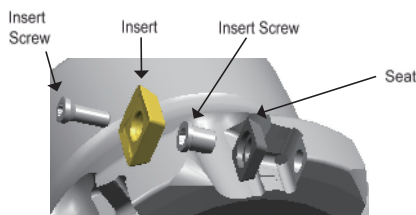
Work material: 4140
 Tool: WFX12100R ($\varnothing 3.94$ " x 5 flutes)
 Cutting Conditions
 $v_c = 656$ SFM
 $f_z = 0.004$ IPT
 $a_e = 3.543$ "
 $a_p = 0.118$ "



Spare Parts

Applicable Cutters	Seat	Seat Screw	Insert Screw	Torque	Wrench (insert)	Wrench (seat)
WFX12040E	-	-	BFTX03512IP	3.0N * m	TRDR15IP	-
Other WFX types	WFXS4R	BW0507F	BFTX03512IP	3.0N * m	TRDR15IP	LH035

Coolant Through Bolts	
Catalog Number	Cutter Size
BFXH 3/8 x 1	2.00"
BFXH 1/2 x 1 1/4	2.50"
BFXH 1/2 x 1 1/4	3.00"
BFXH 5/8 x 1 1/4	4.00"
BFXH 3/4 x 1 1/2	5.00"



Recommended Cutting Conditions

ISO	Work Material	Rating	Cutting Speed v_c (SFM/m/min)		Feed Rate f_z (IPT/mm/t)		D.O.C. (In/mm)	Grades
			Min.-Optimum-Max	Min.-Optimum-Max	Min.-Optimum-Max	Min.-Optimum-Max		
P	General Steel	G	492-656-820	0.004-0.006-0.008	< 0.394	ACP200		
			150-200-250	0.10-0.15-0.20	< 10.0	ACP300		
	Soft Steel	G	591-869-1148	0.004-0.006-0.008	< 0.394	ACP200		
P	Die Steel	S	180-265-350	0.10-0.15-0.20	< 10.0	ACP300		
			328-492-656	0.004-0.006-0.008	< 0.236	ACP200		
M	Stainless Steel	S	100-150-200	< 6.0	ACP300			
			525-672-820	0.004-0.006-0.008	< 0.394	ACP300		
K	Cast Iron	S	160-205-250	0.10-0.15-0.20	< 10.0	ACP300		
			328-574-820	0.004-0.006-0.008	< 0.394	ACK200		
K	Cast Iron	S	100-175-250	0.10-0.15-0.20	< 10.0	ACK300		

Four-cornered shoulder mill for steel, stainless steel, and cast iron machining



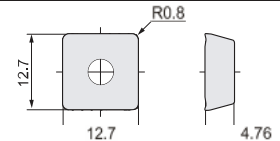
SAVE 50% on WFX Cutters

WFX Cutter Bodies - INCH											
Cat. No.	Stock	Dimensions (inch)							No. of Teeth	Pitch	KIT Price
		øD	øD ₁	F	ød	a	b	E			
WFX42000R	●	2.000	1.500	1.750	0.750	0.312	0.187	0.750	3	Coarse	\$282.50
WFX42500R	●	2.500	1.750	1.750	1.000	0.375	0.218	0.750	4		\$309.50
WFX43000R	●	3.000	2.250	1.750	1.000	0.375	0.218	0.750	4		\$343.00
WFX44000R	●	4.000	2.870	2.000	1.250	0.500	0.280	0.750	5		\$392.50
WFX45000R	●	5.000	3.750	2.500	1.500	0.625	0.380	1.000	6		\$486.00
WFX46000R	●	6.000	4.380	2.500	1.500	0.625	0.380	1.060	8		\$619.00
WFX48000R	●	8.000	5.120	2.500	2.500	1.000	0.560	1.595	10	\$766.50	
WFXF42000R	●	2.000	1.500	1.750	0.750	0.312	0.187	1.020	4	Fine	\$304.50
WFXF42500R	●	2.500	1.750	1.750	1.000	0.375	0.218	1.020	5		\$342.50
WFXF43000R	●	3.000	2.250	1.750	1.000	0.375	0.218	1.020	6		\$381.50
WFXF44000R	●	4.000	2.870	2.000	1.250	0.500	0.280	1.060	7		\$425.50
WFXF45000R	●	5.000	3.750	2.500	1.500	0.625	0.380	1.060	8		\$535.50
WFXF46000R	●	6.000	4.380	2.500	1.500	0.625	0.380	1.060	12		\$667.50
WFXF48000R	●	8.000	5.120	2.500	2.500	1.000	0.560	1.595	16	\$860.50	
WFXX42000R	●	2.000	1.500	1.750	0.750	0.312	0.187	1.020	5	Super Fine	\$321.00
WFXX42500R	●	2.500	1.750	1.750	1.000	0.375	0.218	1.020	6		\$359.50
WFXX43000R	●	3.000	2.250	1.750	1.000	0.375	0.218	1.020	8		\$420.00
WFXX44000R	●	4.000	2.870	2.000	1.250	0.500	0.280	1.060	10		\$513.50
WFXX45000R	●	5.000	3.750	2.500	1.500	0.625	0.380	1.060	12		\$645.50



KIT Includes Body & 10 Inserts

Inserts	Cat. No.	Coated Carbide					Carbide			Cermet	
		ACP100	ACP200	ACP300	ACK200	ACK300					
	SOMT 120408PDER-L	○	○	○	○	○					
	SOMT 120408PDER-G	○	○	○	○	○					
	SOMT 120408PDER-H	○	○	○	○	○					



Offer Valid until February 28, 2012



3040 N. Pointer Road ■ Appleton, WI 54911
 800-734-2573 ■ 920-734-2573
 Fax: 920-734-1749
 Email: sales@valleytool.net
 Web: www.valleytool.net